

# Community Facilities

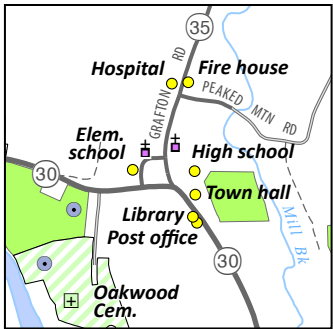
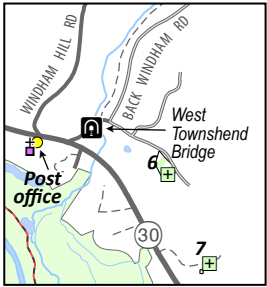
Town of Townshend, Vt.  
2025 Town Plan



Map by Windham Regional Commission, 3/2025  
U:\GIS\Towns\Townshnd\MAPS\TownPlanMaps\_2025.aprx:  
L, CommFac 8x11

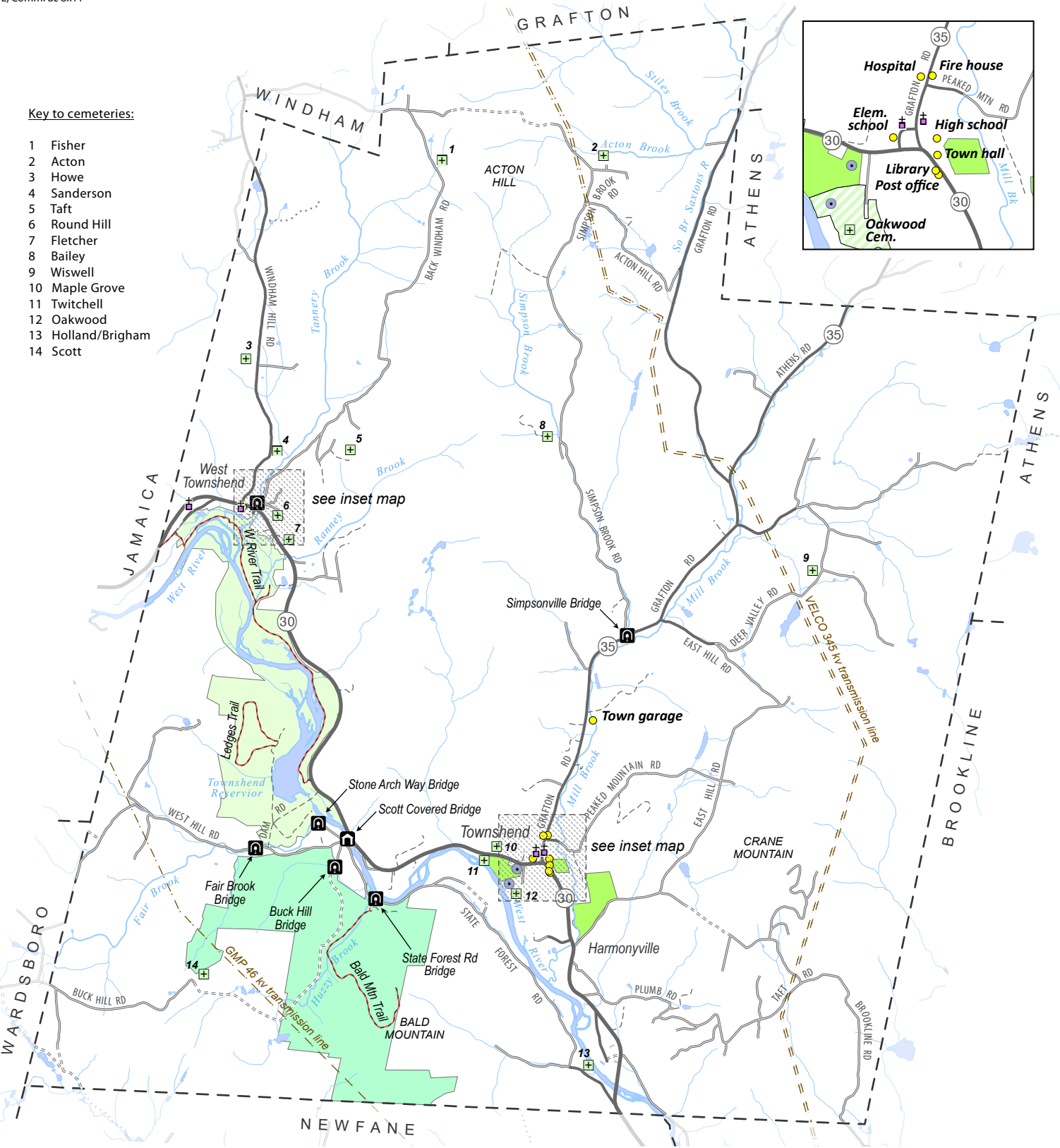
**DRAFT**

- Large capacity septic disposal field
- Electric transmission line
- Church
- Community facility
- covered bridge
- stone arch bridge
- Public cemetery
- Recreational trail



Key to cemeteries:

- 1 Fisher
- 2 Acton
- 3 Howe
- 4 Sanderson
- 5 Taft
- 6 Round Hill
- 7 Fletcher
- 8 Bailey
- 9 Wiswell
- 10 Maple Grove
- 11 Twitchell
- 12 Oakwood
- 13 Holland/Brigham
- 14 Scott



# Existing Land Use

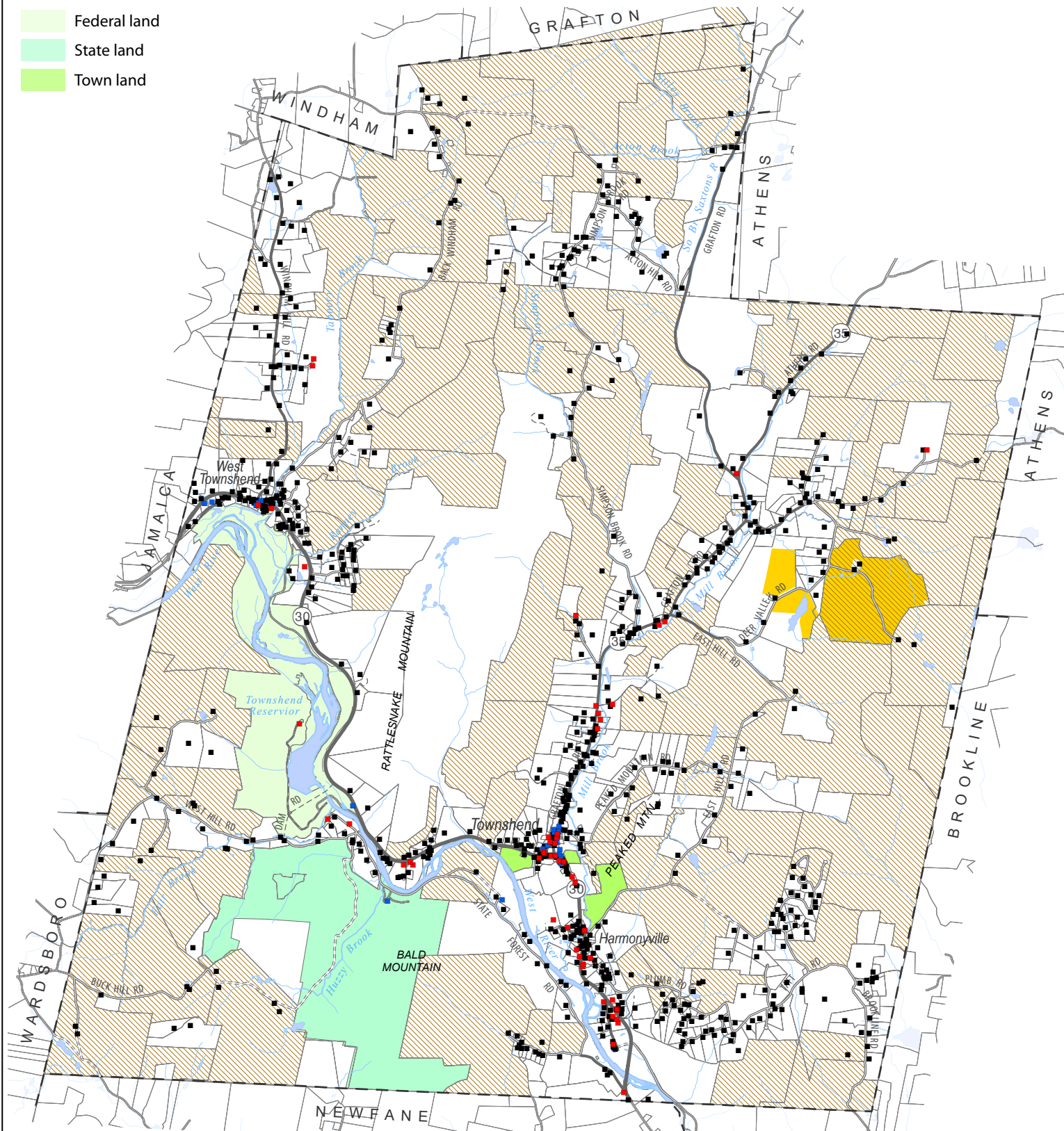
**DRAFT**

Town of Townshend, Vermont  
2025 Town Plan



- Commercial building
- Public/institutional building
- Residential building
- ▭ Parcel boundary
- ▨ Parcel enrolled in Use Value Appraisal
- Conservation easement
- Federal land
- State land
- Town land

0 1 Mile



# Future Land Use

## Town of Townshend, Vermont 2025 Town Plan

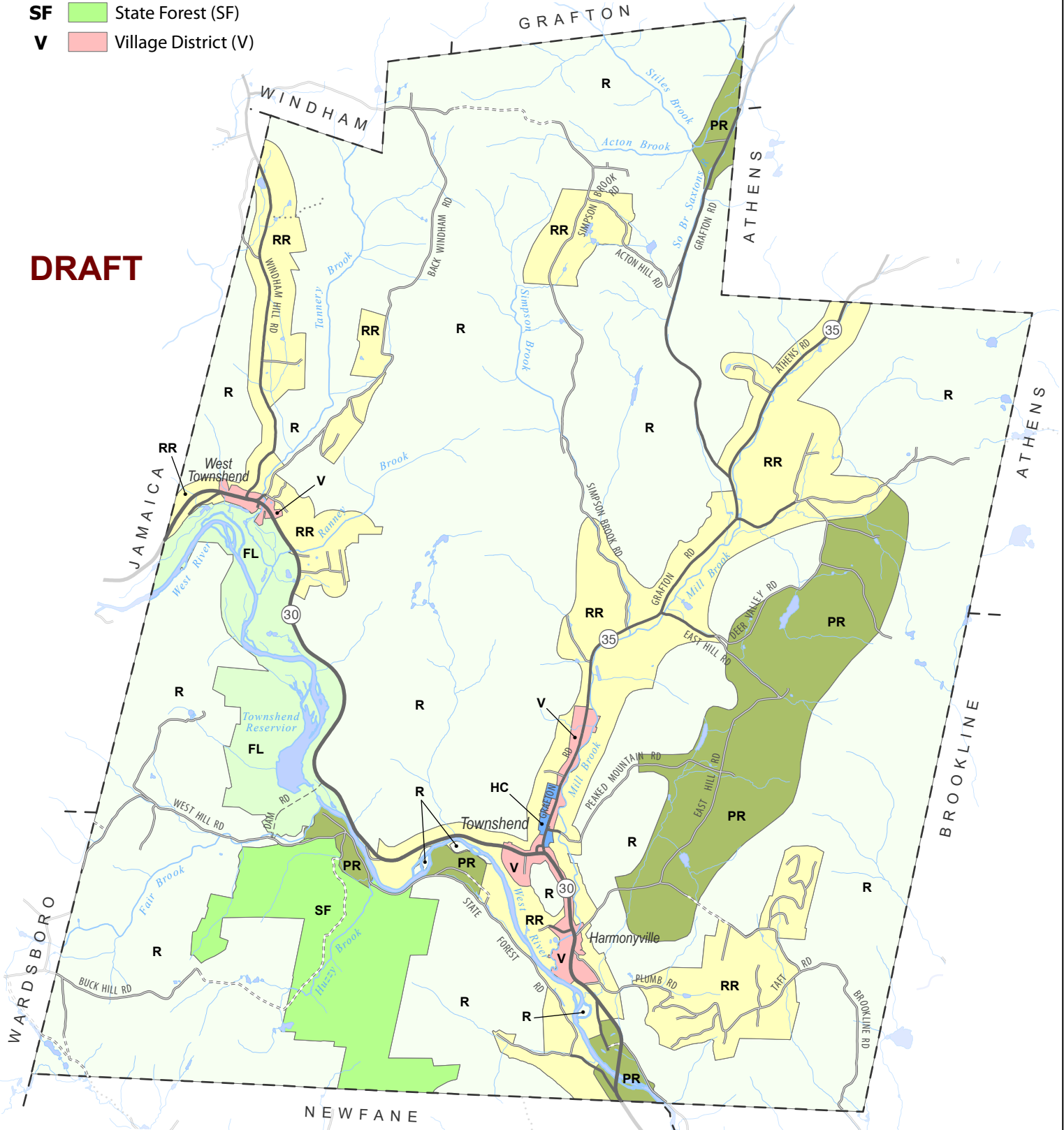


- FL**  Federal Land (FL)
- HC**  Health Care Services District (HC)
- PR**  Productive Rural Lands (PR)
- R**  Resource Lands (R)
- RR**  Rural Residential (RR)
- SF**  State Forest (SF)
- V**  Village District (V)

Data sources: future land use areas were defined by the Townshend Planning Commission and digitized by the Windham Regional Commission.

0 1 Mile

**DRAFT**

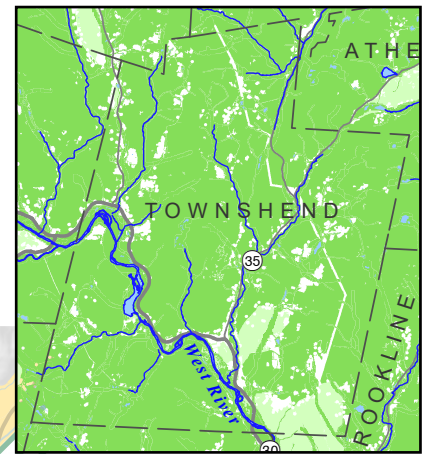


# Natural Resources

## Town of Townshend, Vt. 2025 Town Plan



Data sources: Data sources: wetlands from the Vermont Significant Wetlands Inventory, 2023; deer wintering areas from Vermont Dept. of Fish and Wildlife, updated through 2023; Natural Heritage data from VT Dept. of Fish and Wildlife, Natural Heritage Inventory Database, current to spring 2024; agricultural soil delineations are derived using soils data, soil boundaries were digitized from 1:20,000 orthophotos for the Windham County Soil Survey.



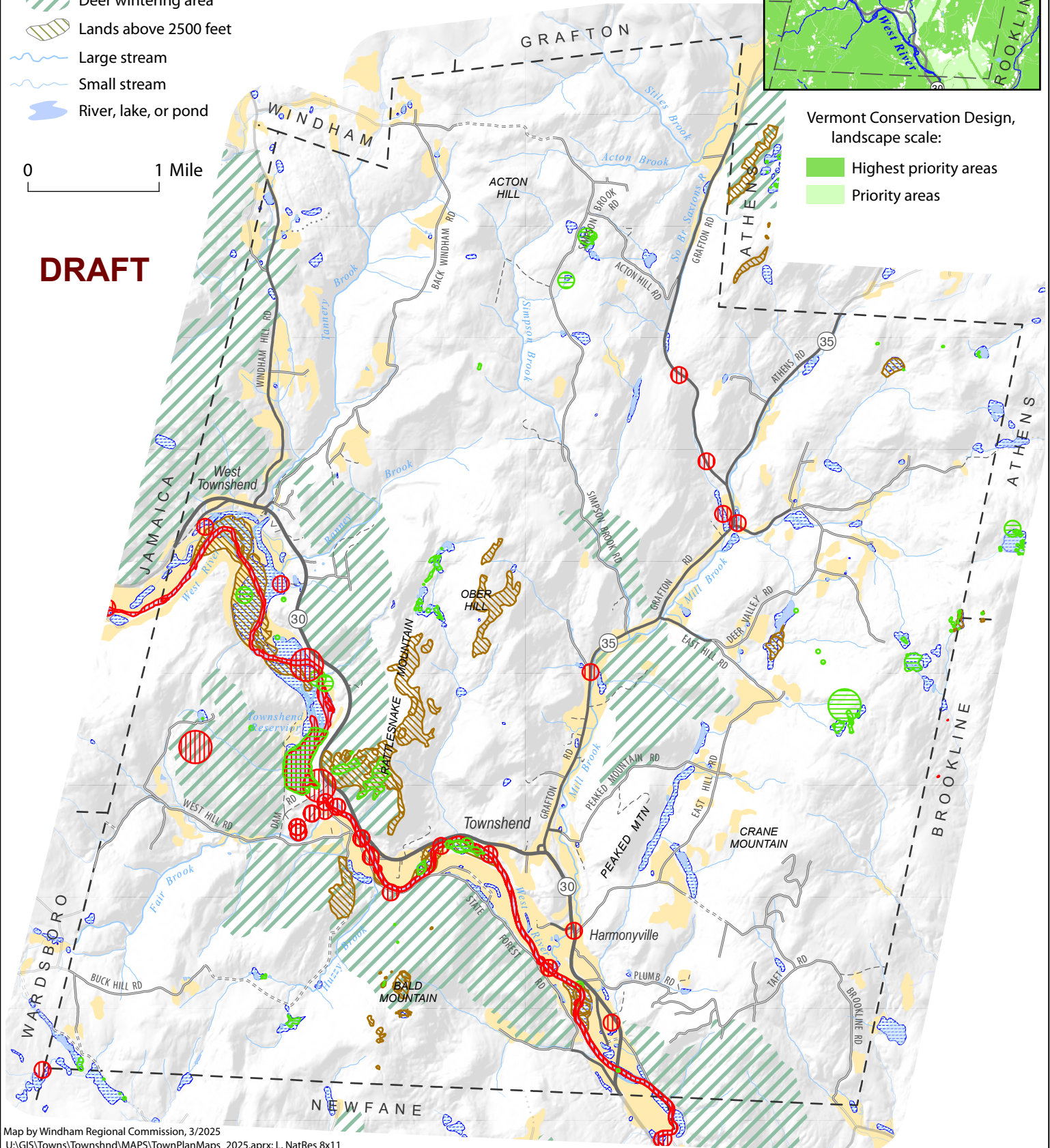
- Natural Heritage occurrence, plant
- Natural Heritage occurrence, animal
- Significant Natural Community
- Important farmland soil
- Wetland
- Deer wintering area
- Lands above 2500 feet
- Large stream
- Small stream
- River, lake, or pond

0 1 Mile

**DRAFT**

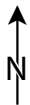
Vermont Conservation Design,  
landscape scale:

- Highest priority areas
- Priority areas



# Transportation System

## Town of Townshend, Vermont 2025 Town Plan

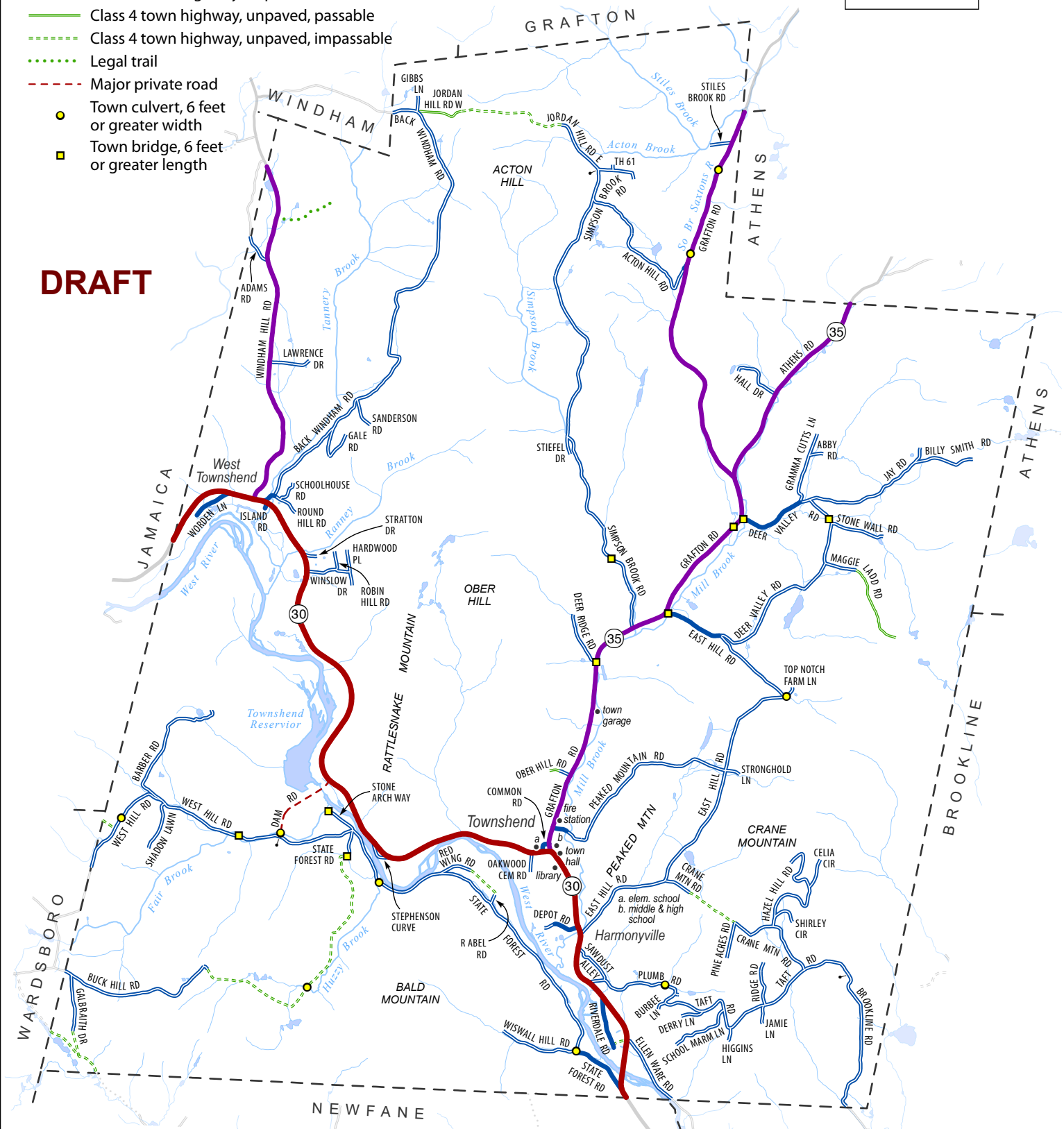


- State Highway
- Class 2 highway, paved
- Class 3 town highway, paved
- Class 2 town highway, unpaved
- Class 3 town highway, unpaved
- Class 4 town highway, unpaved, passable
- Class 4 town highway, unpaved, impassable
- Legal trail
- Major private road
- Town culvert, 6 feet or greater width
- Town bridge, 6 feet or greater length

Data sources: roads data from Vtrans, updated by WRC in 2025; bridge and culvert data from VTCulverts, maintained by WRC.

0 1 Mile

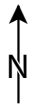
DRAFT



# Water Resources

DRAFT

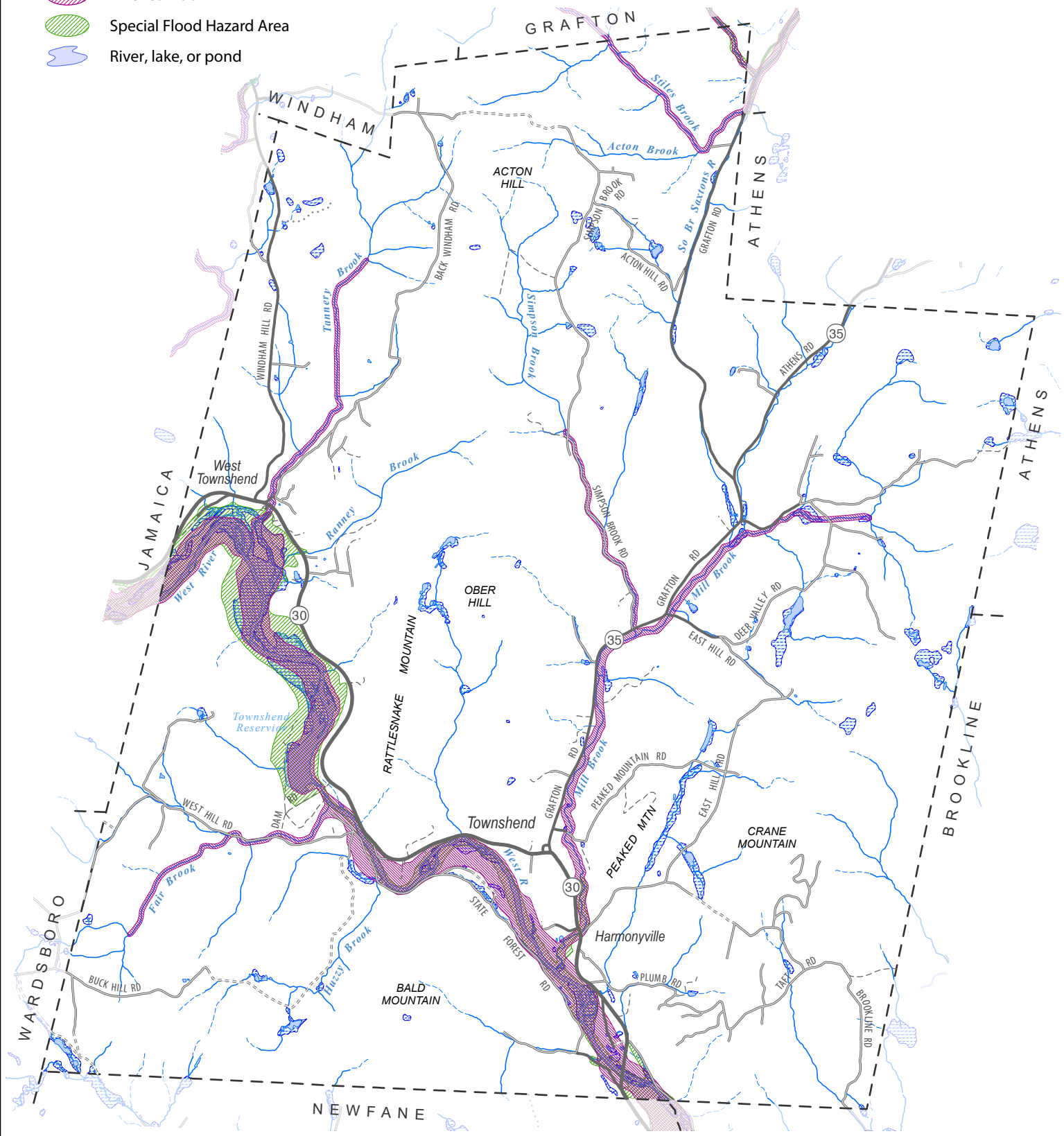
Town of Townshend, Vt.  
2025 Town Plan



- Perennial stream
- Intermittent stream
- Wetland
- River corridor \*
- Special Flood Hazard Area
- River, lake, or pond

0 1 Mile

Sources: coming soon!



\*Official source of River Corridor data is [tinyurl.com/floodreadyatlas](https://tinyurl.com/floodreadyatlas).  
Where rivers are not mapped, the corridor is taken to be the area within 50 feet of a perennial stream.

Map by Windham Regional Commission, 3/2025  
U:\GIS\Towns\Townshnd\MAPS\TownPlanMaps\_2025.aprx:  
L, WaterRes 8x11



# Energy Infrastructure and Generation

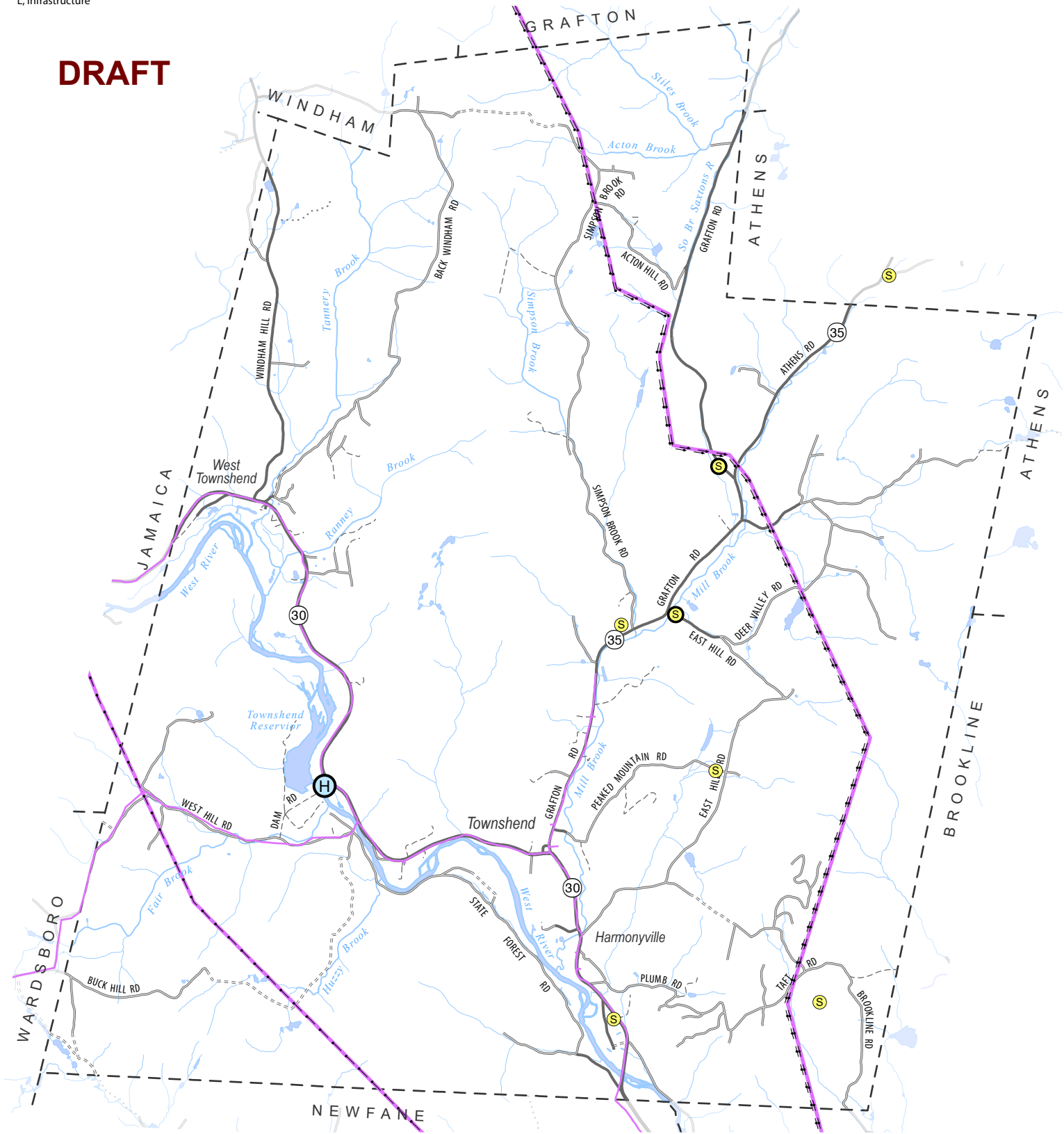
Town of Townshend, Vt.  
2025 Town Plan



Map by Windham Regional Commission, 3/2025  
U:\GIS\Towns\Townshnd\MAPS\EnergyMaps.aprx:  
L, Infrastructure

DRAFT

- Hydro generation site
- Solar generation site, > 100 Kilowatts
- Solar generation site, 15 Kilowatts to 100 Kilowatts
- Transmission line
- Distribution line, 3 phase power



# Wind Potential

## Town of Townshend, Vt. 2025 Town Plan



Map by Windham Regional Commission, 3/2025  
U:\GIS\Towns\Townshnd\MAPS\EnergyMaps.aprx:  
L,Wind

**DRAFT**

Wind Potential, 30m hub height

No Constraint

Possible Constraints

Wind Potential, 30m and 50m hub height

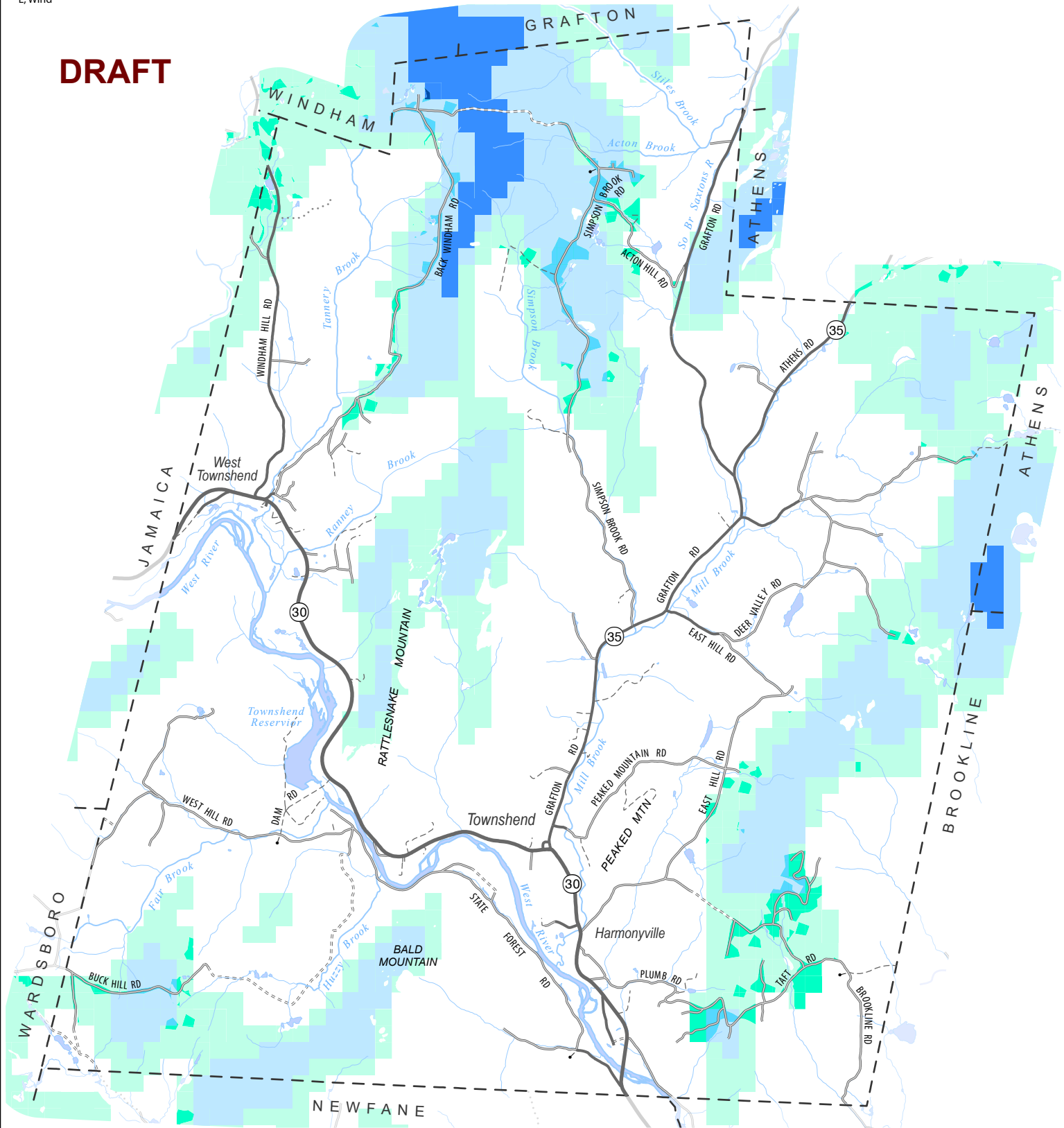
No Constraint

Possible Constraints

Wind Potential, 30m, 50m and 70m hub height



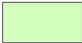
No Constraint

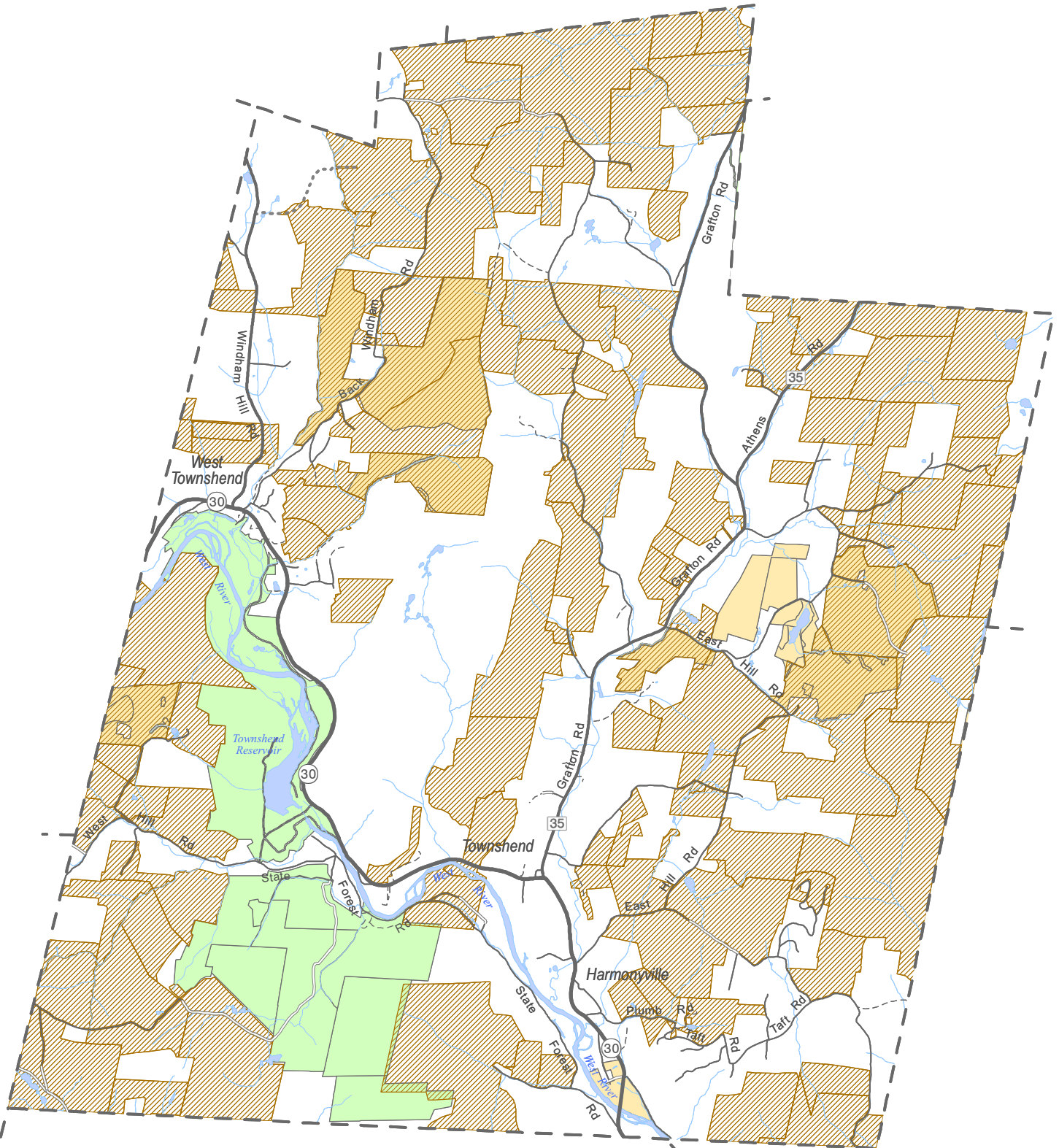
Possible Constraints



# Conservation Lands

## Town of Townshend, Vt.

-  Use Value Appraisal parcels
-  Conservation easement
-  Public land



0.45 0 0.45 0.9 1.35 Miles

1:63,360